



TEST REPORT

REPORT No.: CTB190926008CX

Date: 2019-09-26

Page 1 of 6

Applicant: Forbest Manufacturing Co Ltd

Address: Fulian industrial Longhua Town Shenzhen city Guangdong province China

Manufacturer: Forbest Manufacturing Co Ltd

Address: Fulian industrial Longhua Town Shenzhen city Guangdong province China

The following test samples and sample information are provided and confirmed by the applicant:

Sample Name: FEP FILM

Trade Name: N/A

Model(s): N/A

Sample Receiving Date: 2019-09-24

Testing Period: 2019-09-24~2019-09-26

Test Requested: According to customer's requirement, to lead in the submitted sample (Pb), cadmium (Cd), mercury (Hg), hexavalent chromium (Cr (VI)), polybrominated biphenyls (PBBs) and polybrominated diphenyl ethers (PBDEs) and phthalate (DBP, BBP, DEHP, DIBP) test

Test basis and test results: Please refer to the next page

Conclusion:

Test sample

FEP FILM

According to the instruction

EU RoHS directive 2011/65/EU and its amendment
directive (EU) 2015/863

Result

Pass

Check By: *Spari Weng*

Approve By:



Date: 2019-09-26

Shenzhen CTB Testing Technology Co., Ltd

Floor 1&2, Building E, No. 26 of Xinhe Road, Xinqiao Community, Xinqiao Street, Baoan District, Shenzhen, Guangdong, China

Web: <http://www.ctb-lab.com>

Tel: 4008-258-120

Email: ctb@ctb-lab.com



TEST REPORT

REPORT No.: CTB190926008CX

Date: 2019-09-26

Page 2 of 6

Description of Specimen : No.1 White transparent plastic film

1. Lead, Cadmium, Mercury, Hexavalent Chromium, PBBs and PBDEs —RoHS directive 2011/65/EU and its amendment directive (EU) 2015/863

Test Result (s)

Test Item(s)	Unit	Test Method	Result	MDL	Limit
			No.1		
Lead (Pb)	mg/kg	IEC 62321-5:2013, ICP-OES	N.D.	2	1000
Cadmium (Cd)	mg/kg	IEC 62321-5:2013, ICP-OES	N.D.	2	100
Mercury (Hg)	mg/kg	IEC 62321-4:2013+A1:2017, ICP-OES	N.D.	2	1000
Hexavalent Chromium (Cr(VI))	mg/kg	IEC 62321-7-2:2017, UV-VIS	N.D.	2	1000
Monobromobiphenyl	mg/kg	IEC 62321-6:2015, GC-MS	N.D.	5	-
Dibromobiphenyl	mg/kg	IEC 62321-6:2015, GC-MS	N.D.	5	-
Tribromobiphenyl	mg/kg	IEC 62321-6:2015, GC-MS	N.D.	5	-
Tetrabromobiphenyl	mg/kg	IEC 62321-6:2015, GC-MS	N.D.	5	-
Pentabromobiphenyl	mg/kg	IEC 62321-6:2015, GC-MS	N.D.	5	-
Hexabromobiphenyl	mg/kg	IEC 62321-6:2015, GC-MS	N.D.	5	-
Heptabromobiphenyl	mg/kg	IEC 62321-6:2015, GC-MS	N.D.	5	-
Octabromobiphenyl	mg/kg	IEC 62321-6:2015, GC-MS	N.D.	5	-
Nonabromobiphenyl	mg/kg	IEC 62321-6:2015, GC-MS	N.D.	5	-
Decabromobiphenyl	mg/kg	IEC 62321-6:2015, GC-MS	N.D.	5	-
Sum of PBBs	mg/kg	-	N.D.	-	1000
Monobromodiphenyl ether	mg/kg	IEC 62321-6:2015, GC-MS	N.D.	5	-
Dibromodiphenyl ether	mg/kg	IEC 62321-6:2015, GC-MS	N.D.	5	-
Tribromodiphenyl ether	mg/kg	IEC 62321-6:2015, GC-MS	N.D.	5	-
Tetrabromodiphenyl ether	mg/kg	IEC 62321-6:2015, GC-MS	N.D.	5	-
Pentabromodiphenyl ether	mg/kg	IEC 62321-6:2015, GC-MS	N.D.	5	-
Hexabromodiphenyl ether	mg/kg	IEC 62321-6:2015, GC-MS	N.D.	5	-
Heptabromodiphenyl ether	mg/kg	IEC 62321-6:2015, GC-MS	N.D.	5	-
Octabromodiphenyl ether	mg/kg	IEC 62321-6:2015, GC-MS	N.D.	5	-
Nonabromodiphenyl ether	mg/kg	IEC 62321-6:2015, GC-MS	N.D.	5	-
Decabromodiphenyl ether	mg/kg	IEC 62321-6:2015, GC-MS	N.D.	5	-
Sum of PBDEs	mg/kg	-	N.D.	-	1000

Note:

1. mg/kg = milligram per kilogram= ppm
2. N.D. = Not Detected (<MDL)
3. MDL = Method detection limit
4. "-" = Not Regulated



TEST REPORT

REPORT No.: CTB190926008CX

Date: 2019-09-26

Page 3 of 6

2. Di-(2-ethylhexyl) phthalate(DEHP), Benzylbutyl phthalate(BBP), Dibutyl phthalate (DBP), Diisobutyl phthalate (DIBP) Content —RoHS directive 2011/65/EU and its amendment directive (EU) 2015/863

Test method: With reference to IEC 62321-8:2017, analysis was performed by GC-MS.

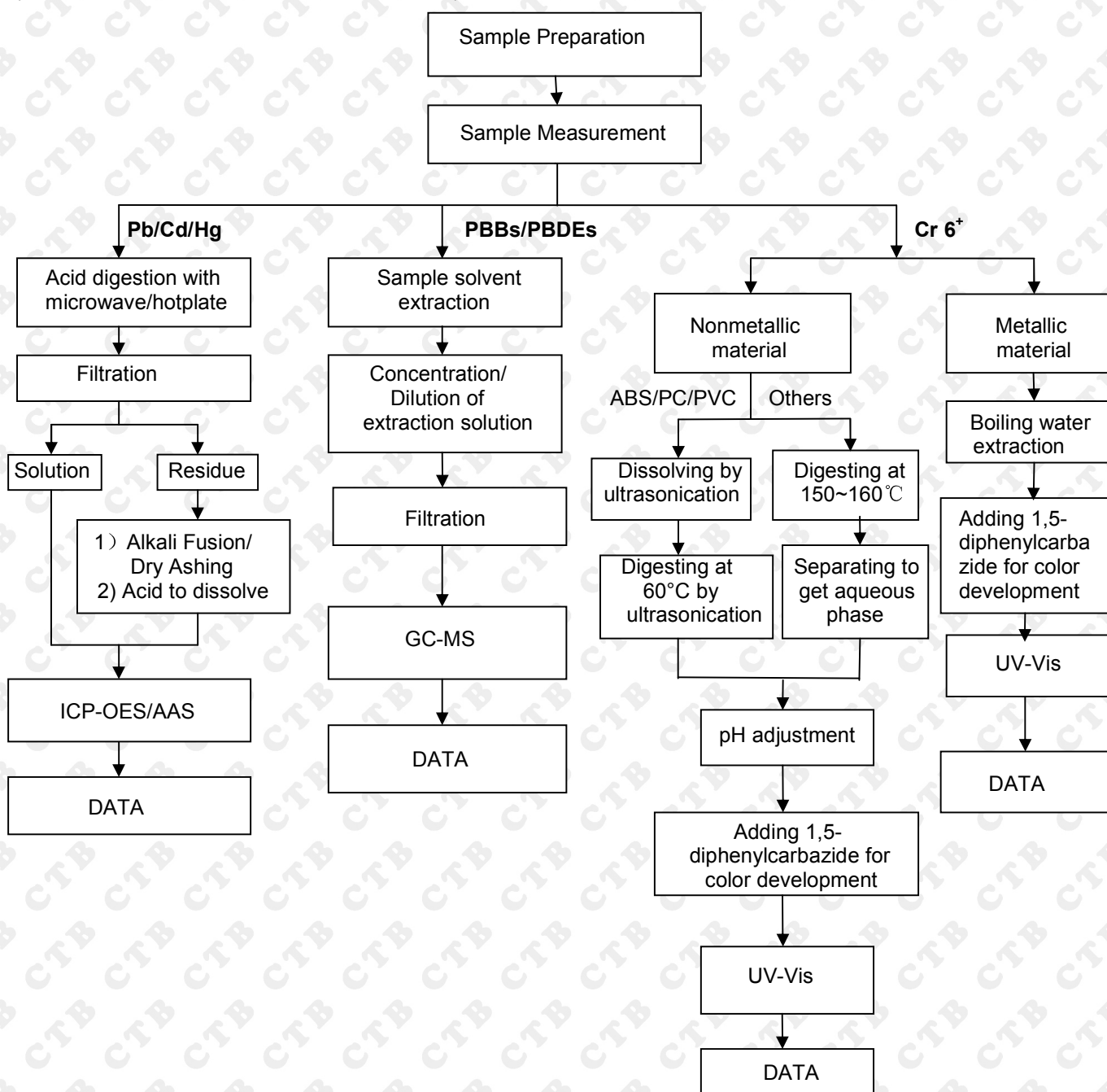
Test Item(s)	Limit	Unit	MDL	Result
				No.1
Di-(2-ethylhexyl) phthalate (DEHP)	1000	mg/kg	30	N.D.
Benzylbutyl phthalate (BBP)	1000	mg/kg	30	N.D.
Dibutyl phthalate (DBP)	1000	mg/kg	30	N.D.
Diisobutyl phthalate(DIBP)	1000	mg/kg	30	N.D.

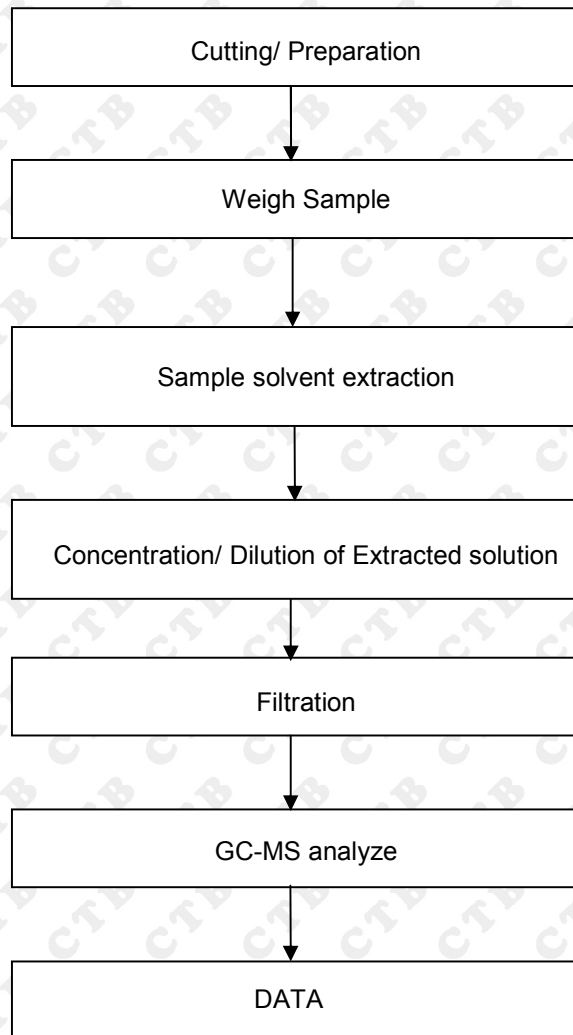
Note:

1. mg/kg = milligram per kilogram = ppm
2. N.D. = Not Detected (<MDL)
3. MDL = Method detection limit

1. Pb/Cd/Hg/Cr6+/PBBs/PBDEs Test flow chart

1) These samples were dissolved totally by pre-conditioning method according to below flow chart. (Cr 6+ and PBBs/PBDEs test method excluded).



2. Phthalate test flow chart



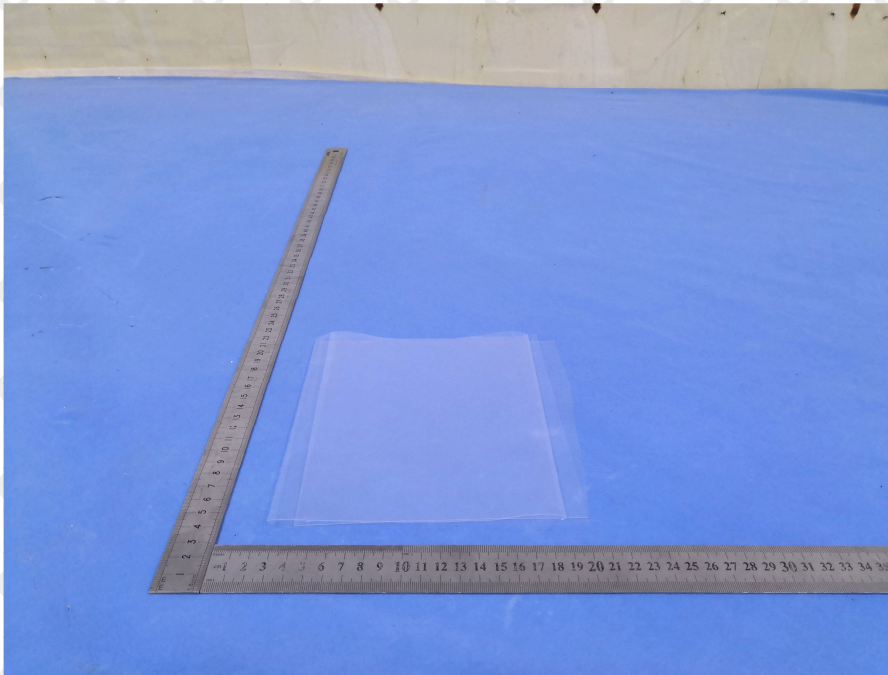
TEST REPORT

REPORT No.: CTB190926008CX

Date: 2019-09-26

Page 6 of 6

Photo documentation



*** End of Report ***